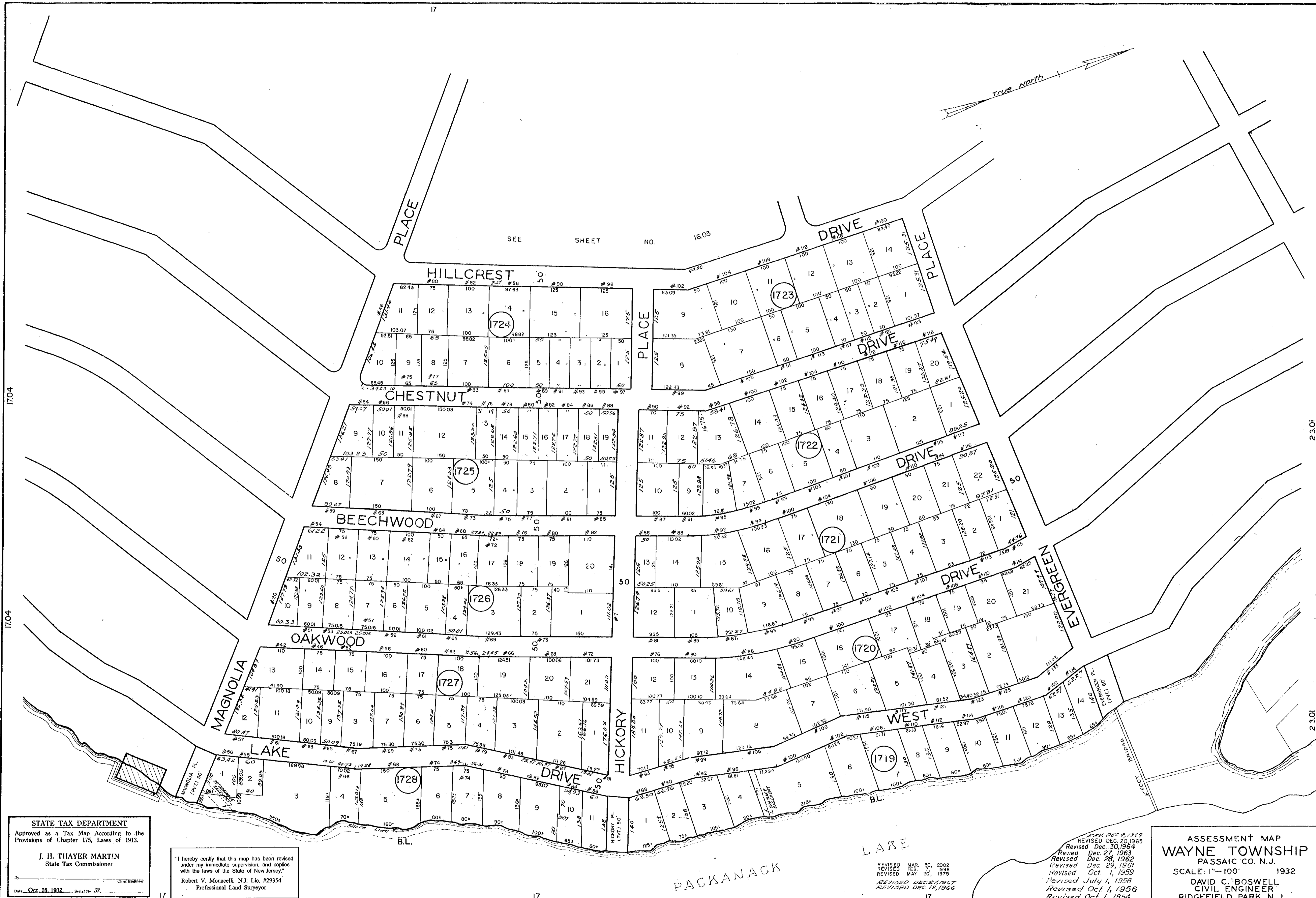


SEE SHEET NO. 16.03



17.04

17.04

23.01

23.01

OK JEC

STATE TAX DEPARTMENT
 Approved as a Tax Map According to the Provisions of Chapter 175, Laws of 1913.

J. H. THAYER MARTIN
 State Tax Commissioner

By _____ Chief Engineer

Date: Oct. 26, 1932. Serial No. 32.

"I hereby certify that this map has been revised under my immediate supervision, and copies with the laws of the State of New Jersey."

Robert V. Monacelli N.J. Lic. #29354
 Professional Land Surveyor

REVISED DEC 4, 1919
 Revised Dec. 30, 1964
 Revised Dec. 27, 1963
 Revised Dec. 28, 1962
 Revised Dec. 29, 1961
 Revised Oct. 1, 1959
 Revised July 1, 1958
 Revised Oct. 1, 1956
 Revised Oct. 1, 1954

REVISED MAR. 30, 2002
 REVISED FEB. 7, 1998
 REVISED MAY 20, 1975

REVISED DEC 27, 1907
 REVISED DEC 12, 1906

ASSESSMENT MAP
WAYNE TOWNSHIP
 PASSAIC CO. N.J.
 SCALE: 1"=100' 1932

DAVID C. BOSWELL
 CIVIL ENGINEER
 RIDGEFIELD PARK N.J.

TAX MAP - 17.03