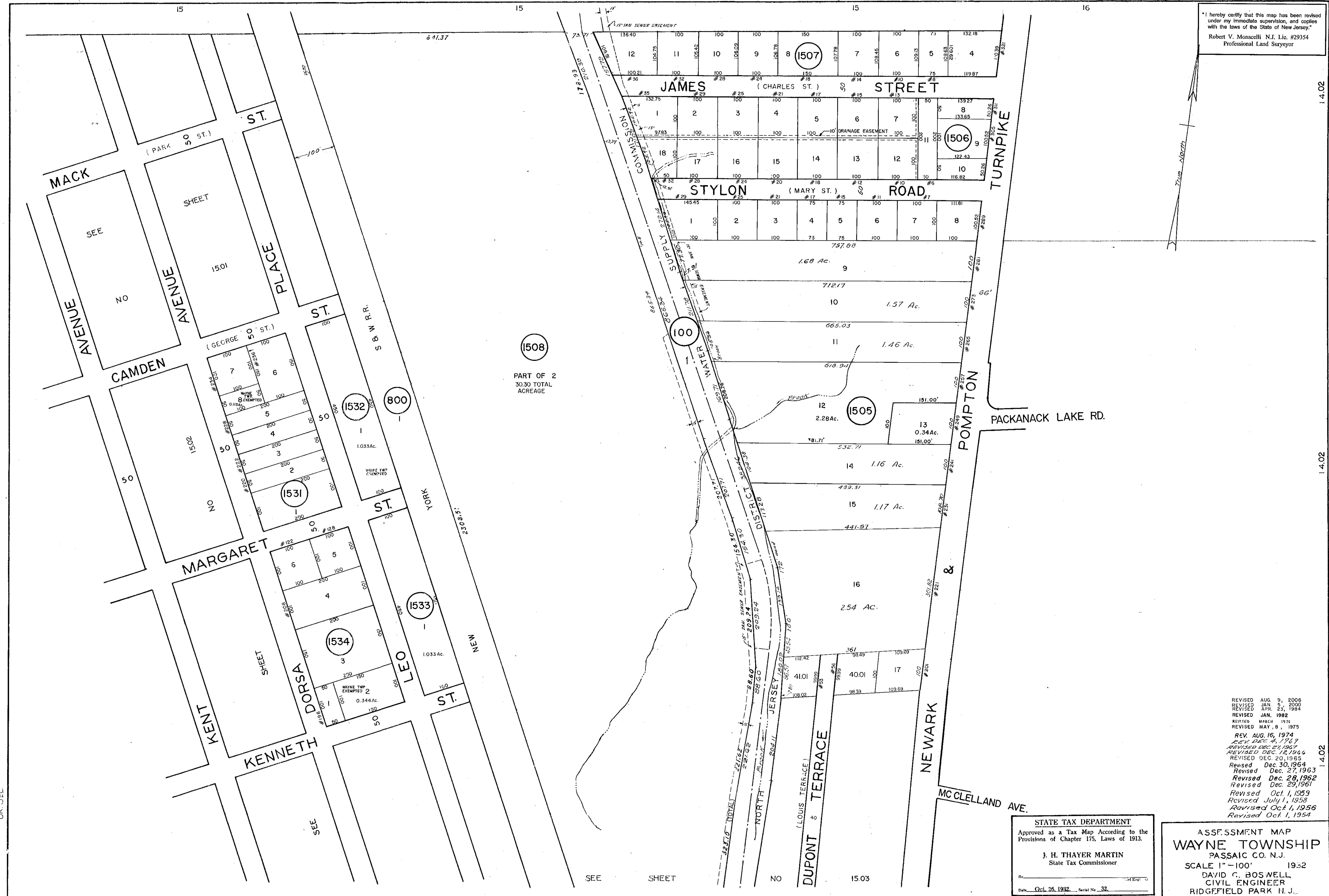


I hereby certify that this map has been revised under my immediate supervision, and copies with the laws of the State of New Jersey.
Robert V. Monacelli N.J. Lic. #29354
Professional Land Surveyor



REVISED AUG. 9, 2006
REVISED JAN. 9, 2000
REVISED APR. 23, 1984
REVISED JAN. 1982
REVISED MARCH 1916
REVISED MAY 8, 1975
REV. AUG. 16, 1974
REV. DEC. 4, 1967
REVISED DEC. 21, 1967
REVISED DEC. 12, 1966
REVISED DEC. 20, 1965
Revised Dec. 30, 1964
Revised Dec. 27, 1963
Revised Dec. 28, 1962
Revised Dec. 29, 1961
Revised Oct. 1, 1959
Revised July 1, 1958
Revised Oct. 1, 1956
Revised Oct. 1, 1954

STATE TAX DEPARTMENT
Approved as a Tax Map According to the Provisions of Chapter 175, Laws of 1913.
J. H. THAYER MARTIN
State Tax Commissioner
Date: Oct. 26, 1932. Serial No. 32.

ASSESSMENT MAP
WAYNE TOWNSHIP
PASSAIC CO. N.J.
SCALE 1" = 100' 1952
DAVID C. BOSWELL
CIVIL ENGINEER
RIDGEFIELD PARK N.J.

14.02

14.02

14.02

TAX MAP - 15.04