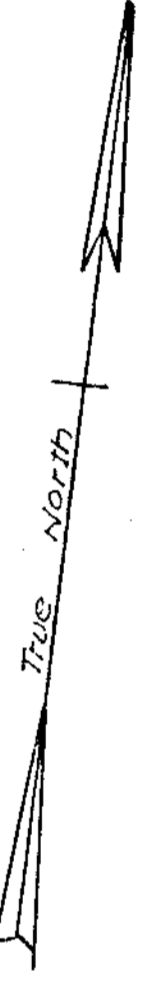
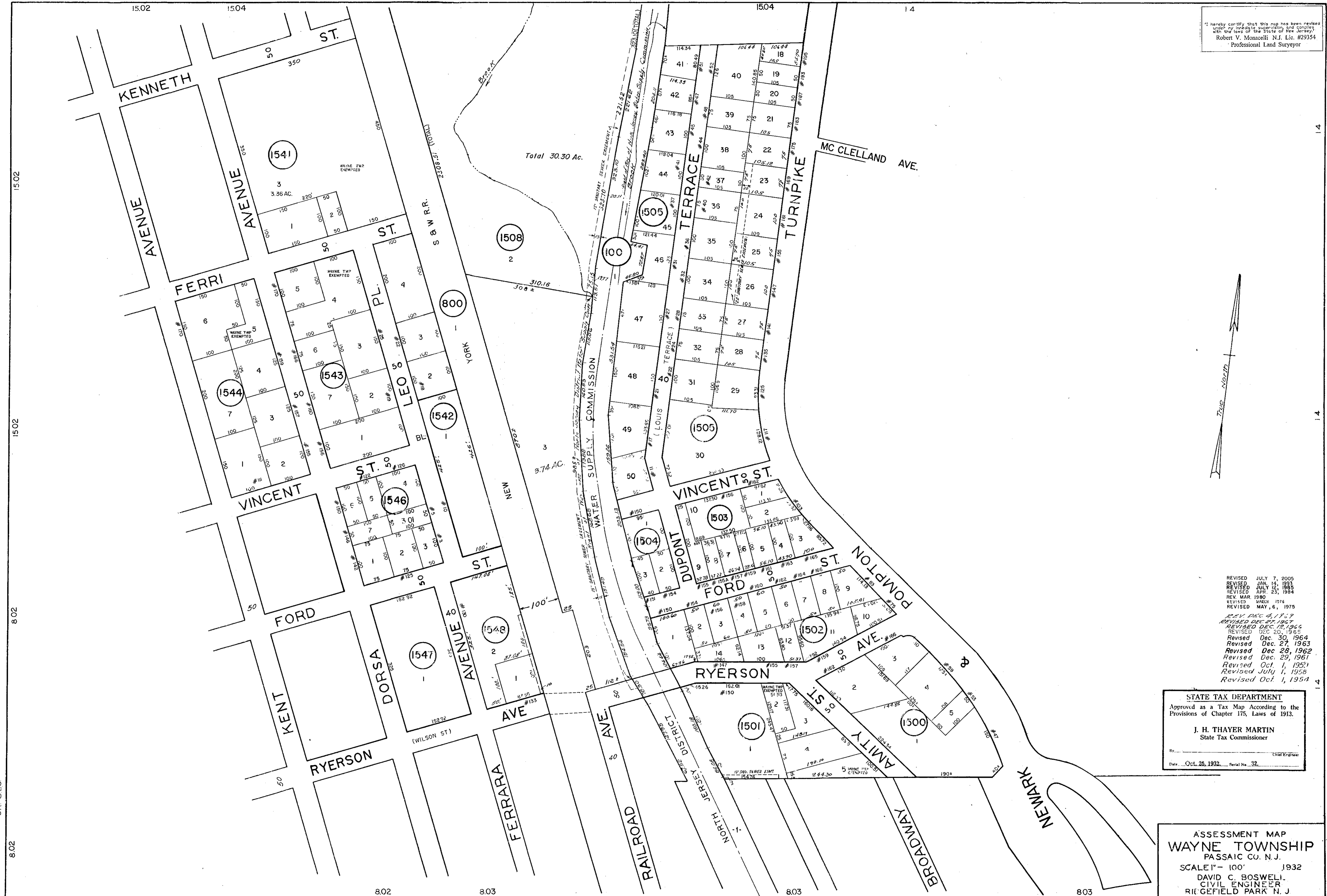


I hereby certify that this map has been revised under my personal supervision and complies with the laws of the State of New Jersey.  
Robert V. Manacelli N.J. Lic. #29354  
Professional Land Surveyor



REVISED JULY 7, 2005  
REVISED JAN. 14, 1993  
REVISED JULY 12, 1985  
REVISED APR. 23, 1984  
REV. MAR. 1980  
REVISED MAR. 1976  
REVISED MAY 6, 1975  
REV. DEC. 4, 1967  
REVISED DEC. 27, 1967  
REVISED DEC. 13, 1966  
REVISED DEC. 20, 1965  
Revised Dec. 30, 1964  
Revised Dec. 27, 1963  
Revised Dec. 28, 1962  
Revised Dec. 29, 1961  
Revised Oct. 1, 1959  
Revised July 1, 1958  
Revised Oct. 1, 1954

STATE TAX DEPARTMENT  
Approved as a Tax Map According to the Provisions of Chapter 175, Laws of 1913.  
J. H. THAYER MARTIN  
State Tax Commissioner  
By: \_\_\_\_\_  
Date: Oct. 26, 1932. Serial No. 32.

ASSESSMENT MAP  
WAYNE TOWNSHIP  
PASSAIC CO. N.J.  
SCALE 1" = 100' 1932  
DAVID C. BOSWELL  
CIVIL ENGINEER  
RIF GEFIELD PARK N.J.

CK. JEC.

TAX MAP - 15.03