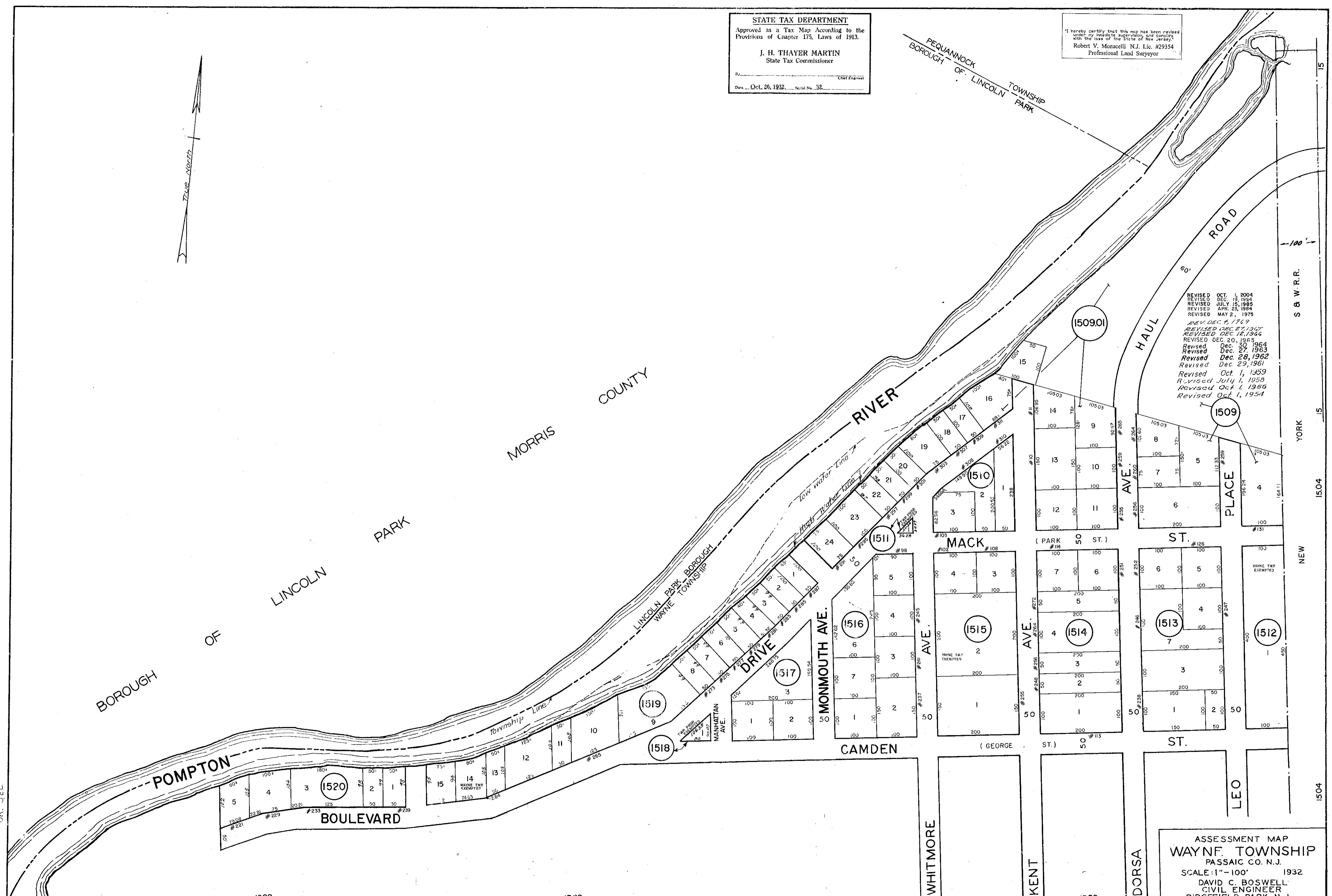


STATE TAX DEPARTMENT  
 Approved as a Tax Map According to the  
 Provisions of Chapter 173, Laws of 1913.  
 J. H. THAYER MARTIN  
 State Tax Commissioner  
 Chief Engineer  
 Date: Oct. 26, 1932. Serial No. 32.

I hereby certify that this map has been revised  
 upon my personal supervision and complies  
 with the laws of the State of New Jersey.  
 Robert V. Monacelli N.J. Lic. #29354  
 Professional Land Surveyor



REVISED OCT. 1, 2004  
 REVISED DEC. 10, 1984  
 REVISED JULY 15, 1985  
 REVISED APR. 23, 1984  
 REVISED MAY 2, 1975  
 REVISED DEC. 27, 1967  
 REVISED DEC. 27, 1967  
 REVISED DEC. 20, 1965  
 REVISED DEC. 30, 1964  
 REVISED DEC. 27, 1963  
 REVISED DEC. 28, 1962  
 REVISED DEC. 29, 1961  
 REVISED OCT. 1, 1959  
 REVISED JULY 1, 1958  
 REVISED OCT. 1, 1956  
 REVISED OCT. 1, 1954

ASSESSMENT MAP  
 WAYNE TOWNSHIP  
 PASSAIC CO. N.J.  
 SCALE: 1" = 100' 1932  
 DAVID C. BOSWELL  
 CIVIL ENGINEER  
 RIDGEFIELD PARK N.J.

OK. J.E.C.

TAX MAP - 15.01