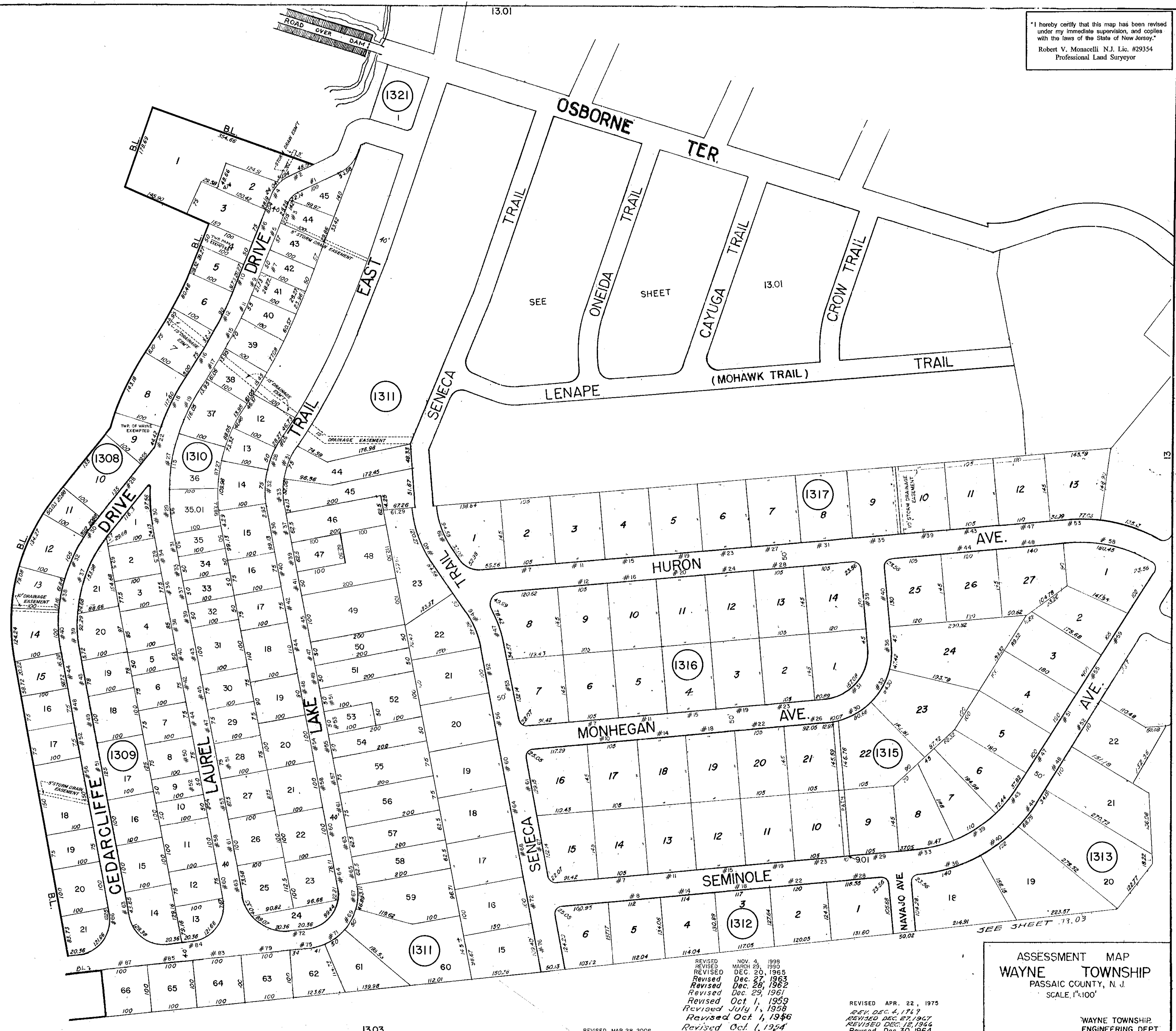


I hereby certify that this map has been revised under my immediate supervision, and copies with the laws of the State of New Jersey.  
Robert V. Monacelli N.J. Lic. #29354  
Professional Land Surveyor



14

13

13.03

REVISED MAR. 28, 2006

REVISED NOV. 4, 1998  
REVISED MARCH 25, 1990  
REVISED DEC. 20, 1965  
REVISED DEC. 27, 1963  
REVISED DEC. 28, 1962  
REVISED DEC. 29, 1961  
REVISED OCT. 1, 1959  
REVISED JULY 1, 1958  
REVISED OCT. 1, 1946  
REVISED OCT. 1, 1944

REVISED APR. 22, 1975  
REV. DEC. 4, 1974  
REVISED DEC. 27, 1967  
REVISED DEC. 12, 1964  
REVISED DEC. 30, 1964

ASSESSMENT MAP  
WAYNE TOWNSHIP  
PASSAIC COUNTY, N. J.  
SCALE: 1"=100'

WAYNE TOWNSHIP  
ENGINEERING DEPT.

TAX MAP - 13.02