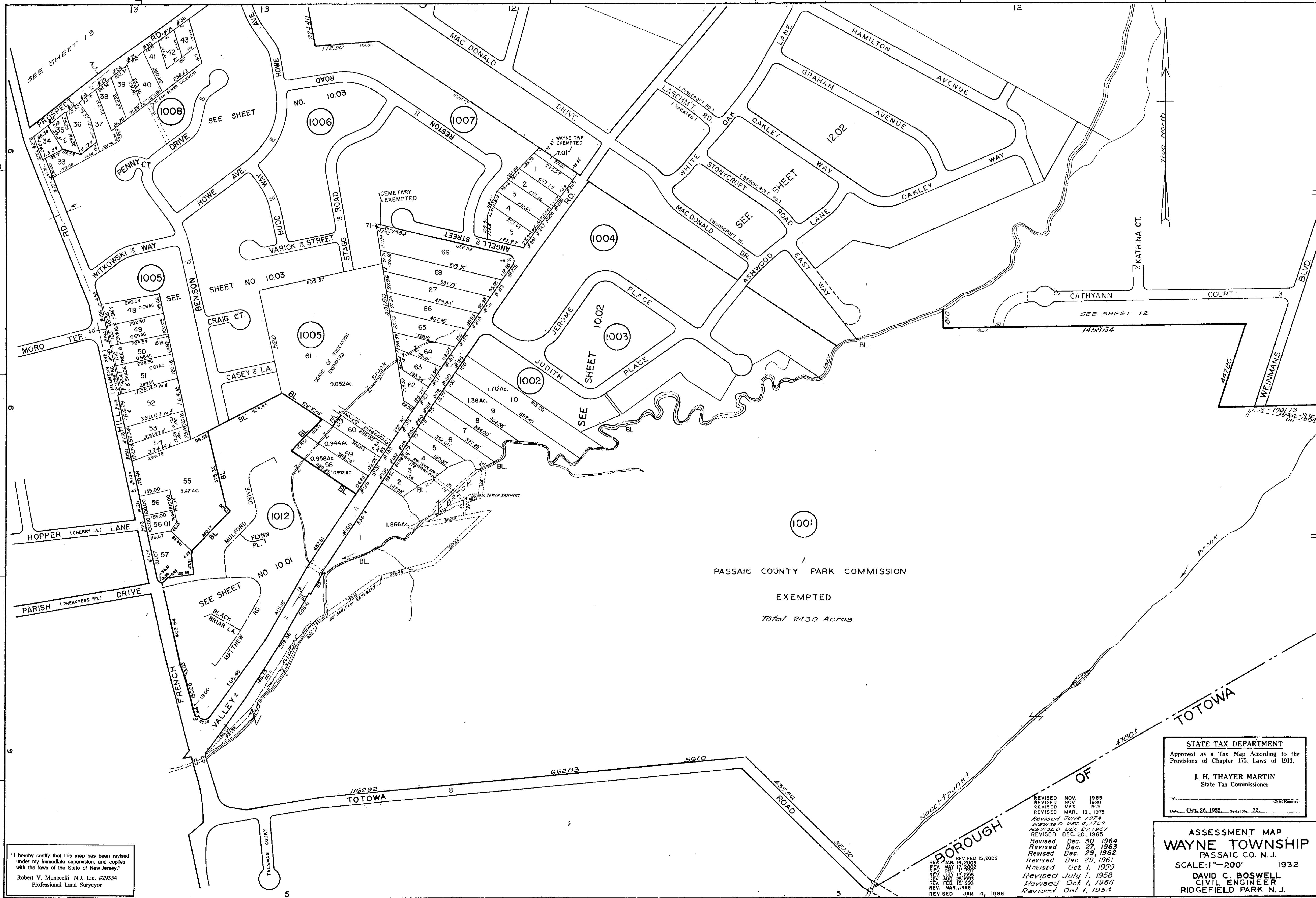


E1900



1
 PASSAIC COUNTY PARK COMMISSION
 EXEMPTED
 Total 2430 Acres

STATE TAX DEPARTMENT
 Approved as a Tax Map According to the
 Provisions of Chapter 175, Laws of 1913.
 J. H. THAYER MARTIN
 State Tax Commissioner
 Date: Oct. 26, 1932. Serial No. 32.

ASSESSMENT MAP
WAYNE TOWNSHIP
 PASSAIC CO. N. J.
 SCALE: 1"=200' 1932
 DAVID C. BOSWELL
 CIVIL ENGINEER
 RIDGEFIELD PARK N. J.

- REVISED NOV. 1985
- REVISED NOV. 1980
- REVISED MAR. 1976
- REVISED MAR. 19, 1975
- Revised June 1974
- Revised Dec. 1969
- REVISED DEC. 27, 1967
- REVISED DEC. 20, 1965
- Revised Dec. 30, 1964
- Revised Dec. 27, 1963
- Revised Dec. 29, 1962
- Revised Dec. 29, 1961
- Revised Oct. 1, 1959
- Revised July 1, 1958
- Revised Oct. 1, 1956
- Revised Oct. 1, 1954

REV. FEB. 15, 2006
 REV. JAN. 16, 2003
 REV. MAY 17, 2002
 REV. JULY 17, 1999
 REV. AUG. 25, 1995
 REV. FEB. 15, 1990
 REV. MAR., 1988
 REVISED JAN. 4, 1986

"I hereby certify that this map has been revised
 under my immediate supervision, and copies
 with the laws of the State of New Jersey."
 Robert V. Monacelli N.J. Lic. #29354
 Professional Land Surveyor

N15000

N14000

N12000

N12000

E14000

E1900