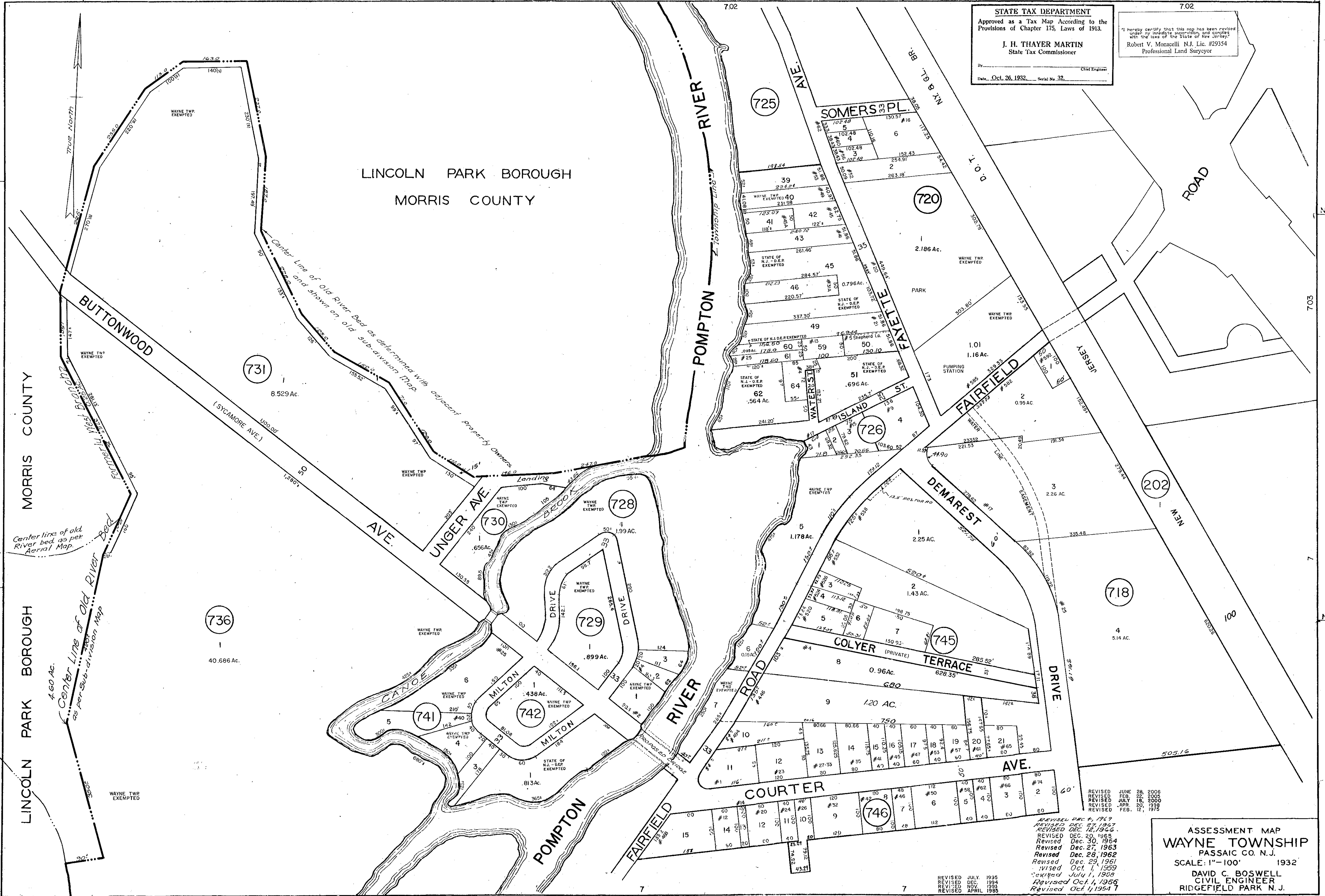


STATE TAX DEPARTMENT
 Approved as a Tax Map According to the
 Provisions of Chapter 175, Laws of 1913.
 J. H. THAYER MARTIN
 State Tax Commissioner
 Date: Oct. 26, 1932. Serial No. 32.

I hereby certify that this map has been revised
 under my immediate supervision and complies
 with the laws of the State of New Jersey.
 Robert V. Monacelli N.J. Lic. #29354
 Professional Land Surveyor

LINCOLN PARK BOROUGH
 MORRIS COUNTY



REVISED JUNE 28, 2006
 REVISED FEB. 22, 2005
 REVISED JULY 18, 2000
 REVISED APR. 25, 1978
 REVISED FEB. 12, 1975

REVISED DEC. 1, 1969
 REVISED DEC. 27, 1967
 REVISED DEC. 12, 1966
 REVISED DEC. 20, 1965
 REVISED DEC. 30, 1964
 REVISED DEC. 27, 1963
 REVISED DEC. 28, 1962
 REVISED DEC. 29, 1961
 REVISED OCT. 1, 1959
 REVISED JULY 1, 1958
 REVISED OCT. 1, 1956
 REVISED OCT. 1, 1954

ASSESSMENT MAP
 WAYNE TOWNSHIP
 PASSAIC CO. N.J.
 SCALE: 1"=100' 1932
 DAVID C. BOSWELL
 CIVIL ENGINEER
 RIDGFIELD PARK N.J.