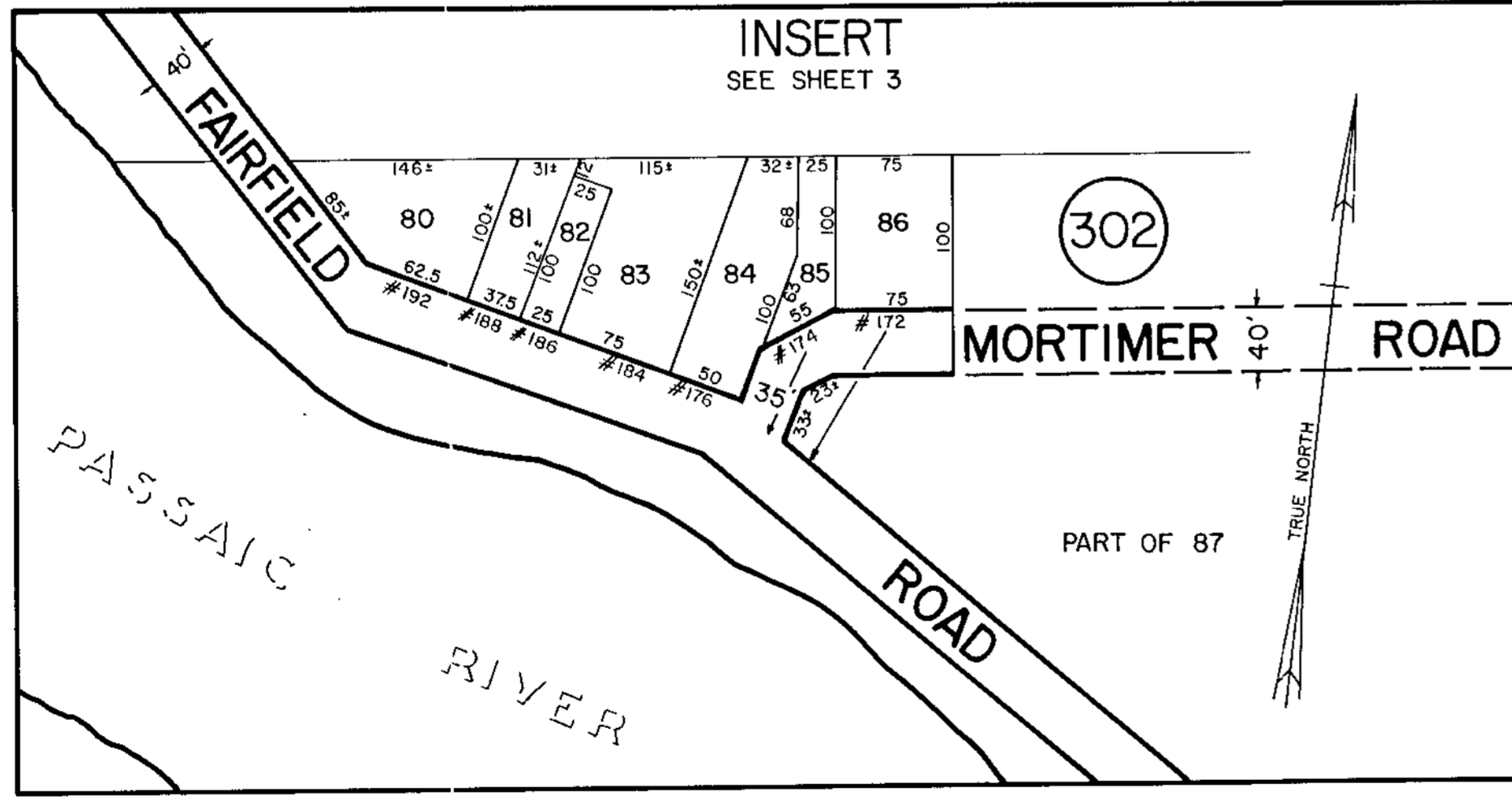


SEE SHEET 3



REVISED MAR. 22, 2006
 REVISED SEPT. 29, 2005
 REVISED JAN. 28, 1975
 REVISED DEC. 4, 1967
 REVISED DEC. 27, 1967
 REVISED DEC. 12, 1966
 REVISED DEC. 20, 1965
 REVISED DEC. 30, 1964
 REVISED DEC. 27, 1963
 REVISED DEC. 28, 1962
 REVISED DEC. 29, 1961
 REVISED OCT. 1, 1959
 REVISED JULY 1, 1958
 REVISED OCT. 1, 1956
 REVISED OCT. 1, 1954

ASSESSMENT MAP
WAYNE TOWNSHIP
 PASSAIC CO. N.J.
 SCALE: 1" = 100'
 REVISED 1950
 CAMPBELL & RUDE
 ENGINEERS
 POMPTON LAKES, N.J.

"I hereby certify that this map has been revised under my immediate supervision, and copies with the laws of the State of New Jersey."
 Robert V. Monacelli N.J. Lic. #29354
 Professional Land Surveyor