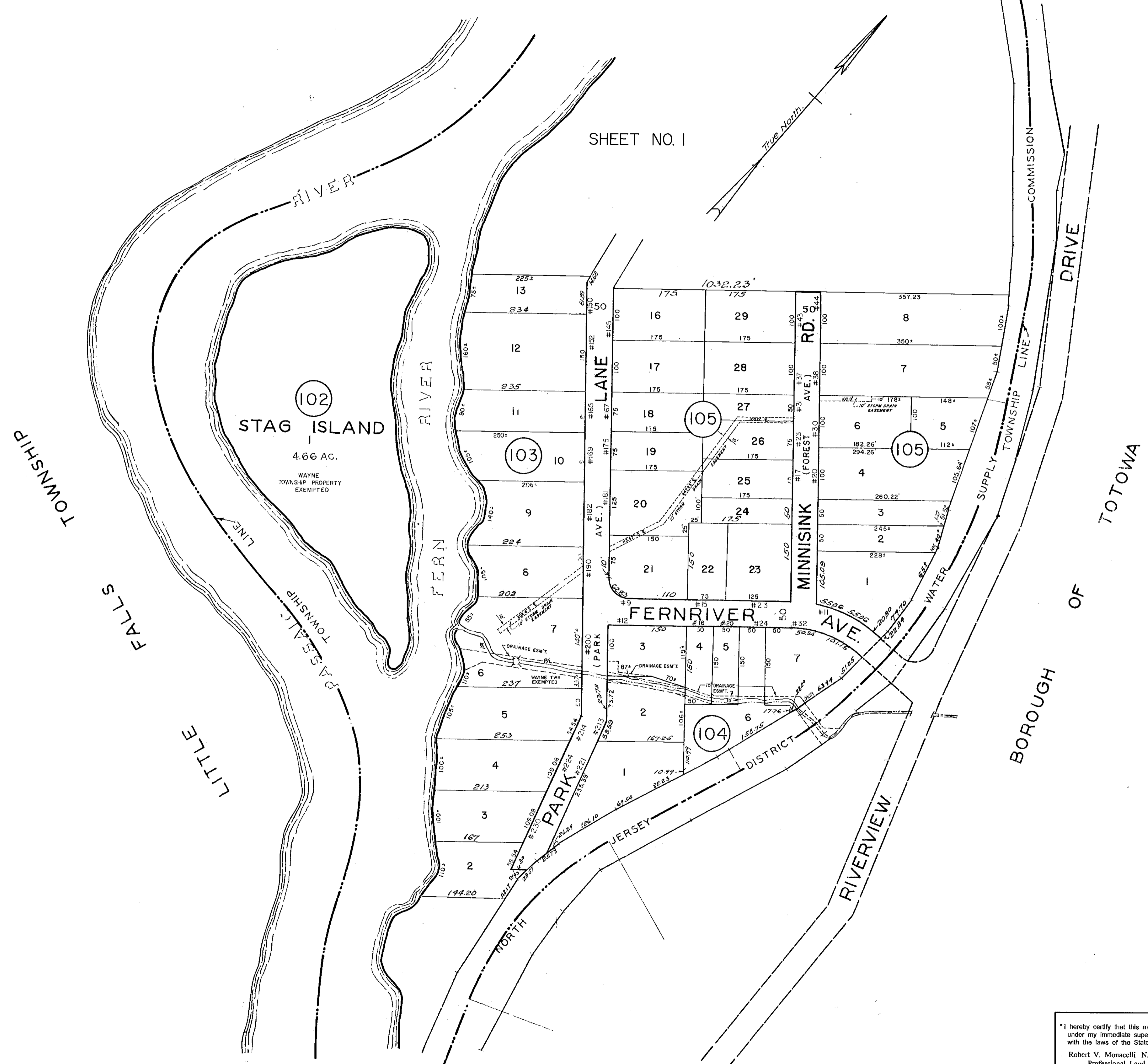
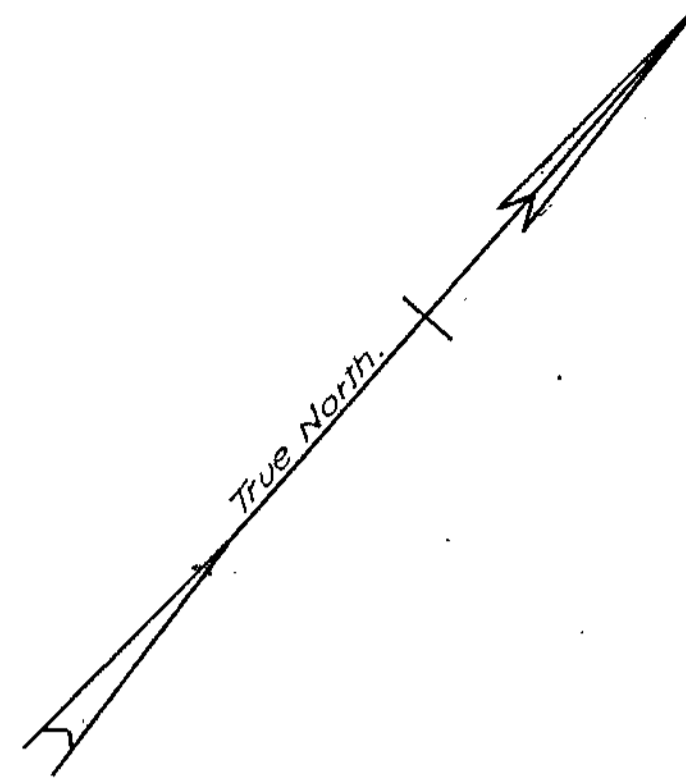


SHEET NO. 1



REVISED MAY 10, 2005
 REVISED APRIL 30, 1998
 REVISED JUNE 23, 1993
 REVISED NOV. 8, 1982
 REVISED JULY, 1982
 REVISED JAN. 3, 1982
 REVISED JAN. 10, 1975
 REVISED DEC. 4, 1969
 REVISED DEC. 27, 1967
 REVISED DEC. 18, 1966
 REVISED DEC. 20, 1965
 Revised Dec. 30, 1964
 Revised Dec. 27, 1963
 Revised Dec. 28, 1962
 Revised Dec. 29, 1961
 Revised Oct. 1, 1959
 Revised July 1, 1958
 Revised Oct. 1, 1956
 Revised Oct. 1, 1954

STATE TAX DEPARTMENT
 Approved as a Tax Map According to the
 Provisions of Chapter 175, Laws of 1913.
 J. H. THAYER MARTIN
 State Tax Commissioner
 Date: Oct. 26, 1932, Serial: 32

ASSESSMENT MAP
 WAYNE TOWNSHIP
 PASSAIC CO. N.J.
 SCALE: 1"=100' 1932
 DAVID C. BOSWELL
 CIVIL ENGINEER
 RIDGEFIELD PARK N.J.

I hereby certify that this map has been revised
 under my immediate supervision, and copies
 with the laws of the State of New Jersey.
 Robert V. Monacelli N.J. Lic. #29354
 Professional Land Surveyor

TAX MAP - 1.01